

PRODUCT RELEASE

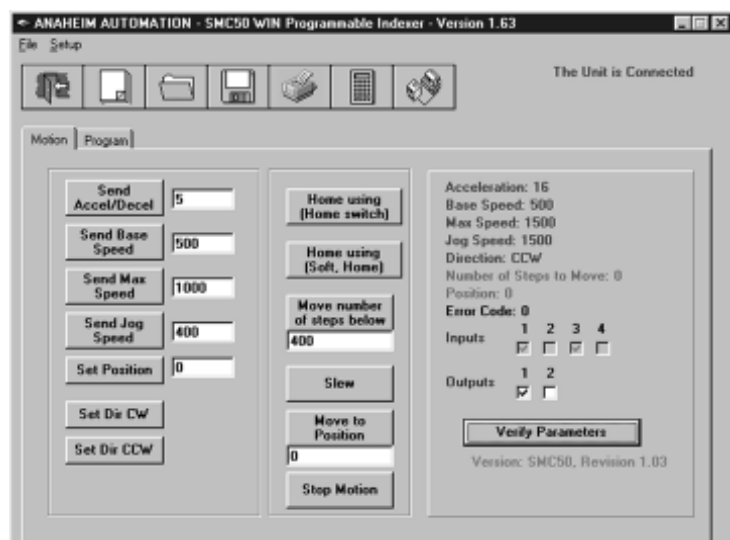
DPC40501 Programmable Driver Pack

- **Controller, Driver and Power Supply In One Cost Effective Package**
- **RS485/RS232 Serial Communications**
- **Up to 32 Axis Can Be Networked**
- **Non-Volatile Stored Programming Memory**
- **Easy to Use Windows Software Included**
- **Capable of Real Time Motion**
- **Looping, Branching, Motion, I/O, and More**
- **Hard, Soft, and Home Limit Switch Inputs**
- **4 Amp Per Phase Output Current**
- **Microstepping Drive Operations**

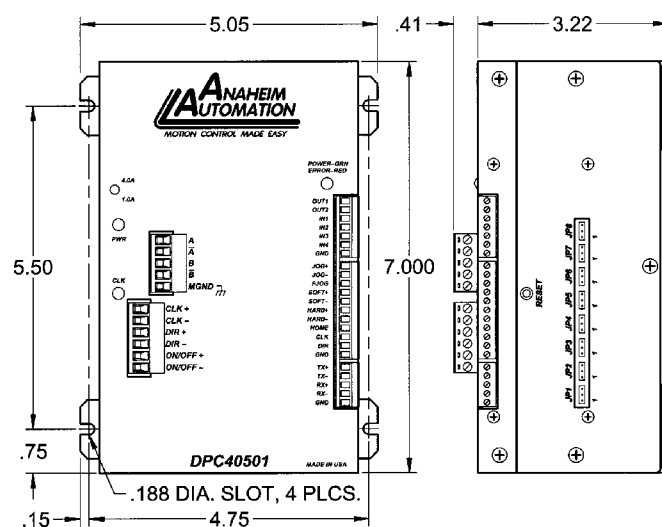


The DPC40501 is a packaged single-axis programmable controller, a 4 amp bipolar microstep driver, and a 48VDC 65W power supply unit. It provides flexible, independent control of bipolar step motors with current ranges from 1.0 to 4.0 amps and microstepping resolutions of 1, 2, 5, 10 and 16. The easy-to-use software, SMC50WIN, can be used to directly control motion and to program the controller utilizing its user friendly commands. The DPC40501 also has the ability for real time functions. A "direct mode" is used to directly control motion for real time movements through serial communication. The DPC40501 has 20 commands which are easy to remember for direct movement and uses the RS485 communication protocol. This enables the user to network up to 32 units from one communications port on your PC or PLC (programmable logic controller). The DPC40501 also has 2 programmable "open drain" outputs and 4 TTL compatible inputs which can be powered from 105VAC to 130VAC.

Easy to Use Windows Software



Dimensions



ANAHEIM AUTOMATION

910 East Orangefair Lane, Anaheim, CA 92801
e-mail: info@anaheimautomation.com

(714) 992-6990 fax: (714) 992-0471
website: www.anaheimautomation.com